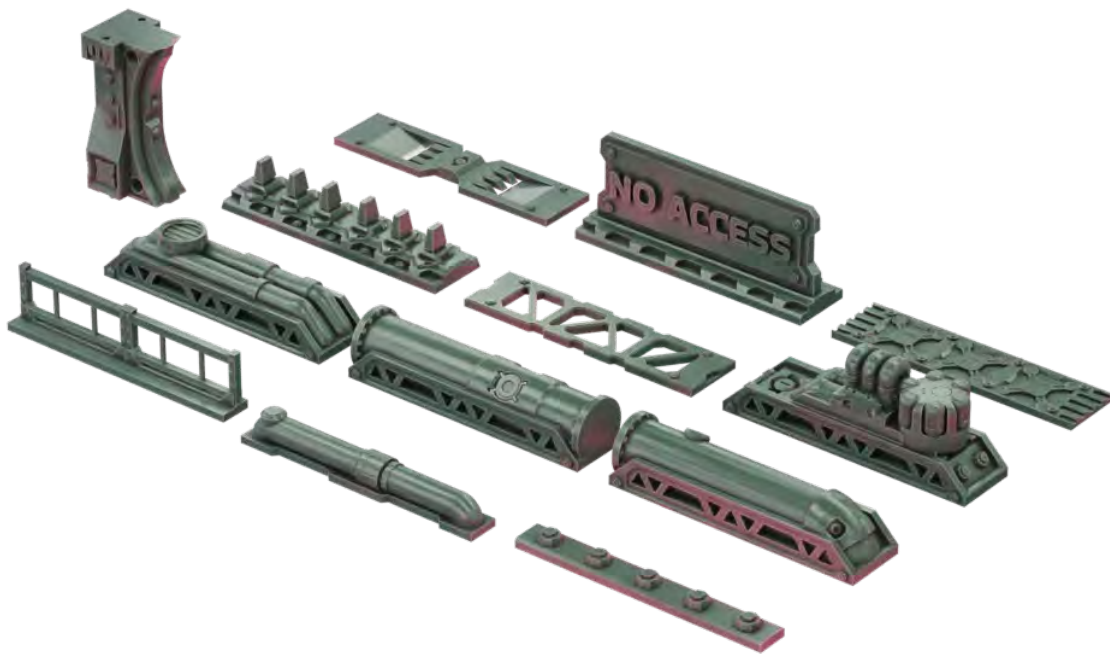


DARKHYVE ASSAULT

Instructions:

CROSSBEAMS & PILLARS

V1.0



SAUCERMEN
STUDIOS

www.saucermenstudios.com.au

Thanks for supporting us!

Please respect our license terms by not *sharing* or selling the files or prints.

Commercial licenses are available if you want to print and sell the terrain – [See our website for info.](#)

Key concepts

This set includes three types of upgrades for the Assault Series terrain range. They act as crossbleams, railing, platform fillers and stand-alone pillars.

See the **DarkHyve Assault CORE SET instructions for more general usage guides.**

HELP & COMMUNITY

- Share your builds
- Get assistance
- Suggest improvements
- Join the community

<https://www.facebook.com/groups/64964644419610>



Parts

Platform Filler A (Railings & Detailed Filler)

As per those in the core set, these thin platform fillers can be used around the edges of platforms.

Note the orientation of the holes.

EG - Platform_Filler_A_01



Platform Filler B (Crossbeams)

These span the width of a standard Wall (Wall A) and connect to a pillar or junction via the matching sockets.

You do not need a wall beneath it.

There are several variants available



Freestanding Pillar

This allows for free placement crossbeams, platforms and anything with compatible sockets from the Assault Series terrain range.

Note the orientation of the pillar as the lip can provide additional inward support.

