

# DARKHYVE ASSAULT

**Instructions:**

## BUILD GUIDES

V1.2



[www.saucermenstudios.com.au](http://www.saucermenstudios.com.au)

### **Example Building Guides**

Below are some example set-ups to get you started building a range of structures using the sets from the DarkHyve Assault terrain Kickstarter. Use them as a guide on what to print for various set-ups.

Please view the complete instructions & parts lists at <https://saucermentstudios.com.au/3d-printed-terrain-guides> for detailed instructions and a visual guide to each part as there are many options.

## Basic Platforms

### Required Parts:

- 4x Junction
- 2x Wall A
- 4x Platform Filler
- 1x Platform A8x Inserts

### Optional Additions:

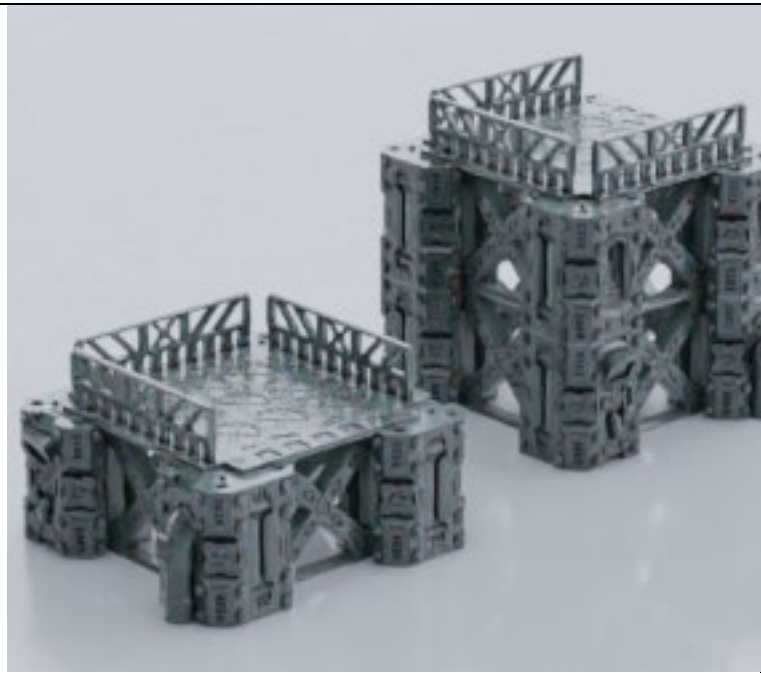
- 1x Ramp or Stairs

### Sets used in Image:

- Core Set

### Notes:

The parts above are for a single story platform, double the walls, inserts & junctions for each additional floor.



## Tri-Platforms

### Required Parts:

- 1x Wall\_Angle\_B
- 2x Wall A
- 1x Floor F
- 3x Junctions
- 6x Inserts

### Optional Parts:

- 1x Stairs
- 1x Walkway A

### Sets used in Image:

- Core Set
- Corner Walls

### Notes:

The parts above are for a single story platform, double the walls, inserts & junctions for each additional floor.



## Checkpoint

### Required Parts:

- 10x Junctions
- 22x Inserts
- 6x Wall A
- 2x Crossbeams
- 1x Gantry B
- 2x Junction Toppers
- 1x Double Gate\_01
- 1x Double Gate\_02
- 2x Double Gate Inset Post\_01
- 2x Gate Post Insert\_01
- 2x Gate\_01

### Sets used in Image:

- Core Set
- Pillars & Crossbeam
- Junction Inserts
- Large Hinged Gates
- Secure Area
- Gantries



## 12" Tile A

### Required Parts:

- 1x Platform\_A\_02
- 8x Platform\_A\_01
- 2x Floor\_B\_02
- 1x Door\_Hinged\_02
- 1x Insert\_01
- 1x Insert\_02
- 1x Insert\_03
- 1x Insert\_05
- 2x Insert\_07
- 4x Insert\_08
- 4x Insert\_09
- 2x Insert\_12
- 4x Junction\_01-Peg
- 3x Junction\_02-Peg
- 1x Junction\_03
- 4x Junction\_03-Peg
- 4x Platform\_Filler\_A\_02
- 1x Wall\_A\_05
- 1x Wall\_A\_09
- 1x Wall\_A\_11
- 1x Wall\_A\_15
- 1x Wall\_A\_18
- 3x Wall\_A\_23
- 1x Wall\_A\_26
- 1x Wall\_A\_27
- 1x Wall\_A\_30
- 2x Wall\_A\_22
- 5x Insert\_14
- 1x Hatch
- 2x Platform\_Filler\_B\_07

### Sets used in Image:

- Core Set
- Pillars & Crossbeam
- Platforms
- Scatter Pack Sump



## 12" Tile B

### Required Parts:

- 4x Platform\_A\_01
- 2x Platform\_A\_02
- 12x Junction\_02-Peg
- 4x  
Double\_Length\_Beam\_01
- 2x  
Double\_Height\_Gothic\_Windows\_01
- 2x  
Double\_Height\_Gothic\_Windows\_02
- 4x Insert\_001
- 8x Insert\_04
- 4x Insert\_06
- 4x Insert\_15
- 3x Platform\_A\_03
- 2x Floor\_A\_01
- 3x Insert\_005
- 1x Insert\_008
- 1x Insert\_01
- 1x Insert\_02
- 2x Junction\_01-Peg
- 2x Topper-A\_07
- 1x Wall\_A\_27

### Sets used in Image:

- Core Set
- Double Height Beams
- Platforms
- Double Height Gothic Windows
- Junction Inserts Pack 1
- Junction Toppers

