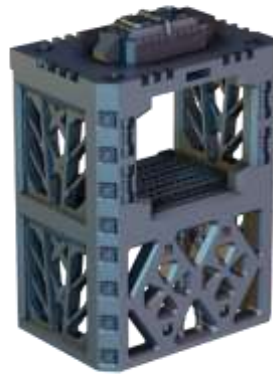




Instructions:

INDUSTRIAL ELEVATOR

V1.0



SAUCERMEN
STUDIOS

www.saucermenstudios.com.au

Thanks for supporting us! You're awesome!

Please respect our license terms by not *sharing* or selling the files or prints.

Commercial licenses are available if you want to print and sell the terrain.

Key concepts

The Industrial Elevator is a modular set that can be adjusted in height. It has removable frame/building sections, rooftop and elevator platform.

It matches the height of building and gantry sections in the Flatline City terrain series.

HELP & COMMUNITY

- Share your builds
- Get assistance
- Suggest improvements
- Join the community

<https://www.facebook.com/groups/64964644419610>

Height & Placement

Stack frame sections to match buildings, gantries or other terrain. Note the alternative frame options with or without doorways.



Platform

The platform can be removed and placed at any floor.

