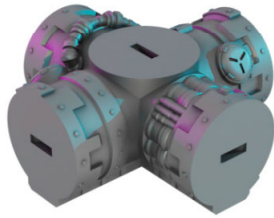




clip (OpenLOCK)



Pipeline - A Cross Flat



Pipeline - A Straight



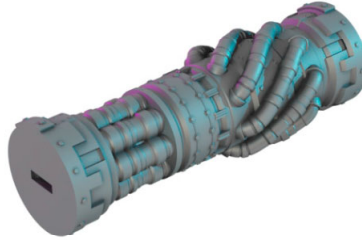
Pipeline - A T-Piece



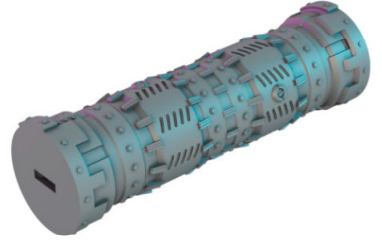
Pipeline - B Straight



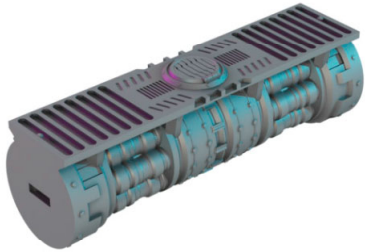
Pipeline - B T-Piece Flat



Pipeline - C Straight 01



Pipeline - C Straight 02



Pipeline - C Straight Walkway



Pipeline - Cap 01



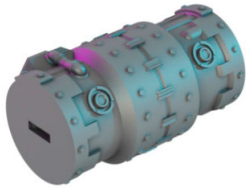
Pipeline - Cap 02



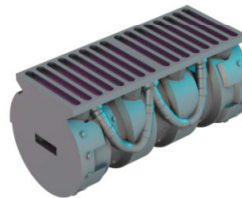
Pipeline - Cap 03



Pipeline - Converter (90 degree)



Pipeline - D Straight



Pipeline - D Straight Walkway



Pipeline - Elbow



Pipeline - Elbow Flat



Pipeline - Elbow Ground