



Instructions:
Transit System

(includes upgrades)

V1.0



SAUCERMEN
STUDIOS

www.saucermenstudios.com.au

Thanks for supporting us! You're awesome!

Please **respect our license terms** by **not *sharing*** or selling the files or prints.

Commercial licenses are available if you want to print and sell the terrain.

KEY CONCEPTS

The Transit System is a modular terrain set that is designed to be compatible with the Flatline City terrain series.

The track can be attached to walkways, buildings and other models. You should refer to the Flatline City Core Set and Gantry System instructions for more details.

HELP & COMMUNITY

- Share your builds
- Get assistance
- Suggest improvements
- Join the community

<https://www.facebook.com/groups/664964644419610>

The Train

The train is made up of three cars that can be connected via OpenLock Clips.



Building the Track

The track is connected using OpenLock Clips.

It can be attached to a platform and other walkways from the Flatline City terrain series.



Raising the track

The supports can be used to make the track higher and can be joined together with OpenLock Clips.



The Coupler

This model is used to cap off any OpenLock Clip Sockets. It can be attached to the track or ends of the train sections.



UPGRADES

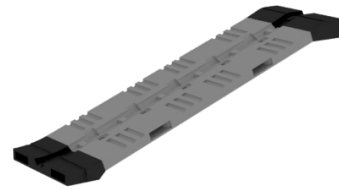
The Transit System Upgrade Kit includes a range of additional supports, angled ramp converters, walkways, smoother bends, railings and OpenLock compatible stairways.

Ramp Converters

Two ramp converters are available:

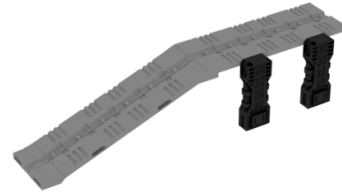
- Transit System - Track (Thin ramp) A
- Transit System - Track (Thin ramp) B

These are used at the top and bottom of any straight track piece to add an incline.



Supports (for Ramps)

When you use the ramp converters to add an incline to your track, you should use the supports that match the track section. EG, the 'short' ramp support is used to support 'short' track pieces on the ramp.



Transit System Walkways

These walkways are a slight variation on the walkways from the Flatline City Gantry System Set, they include railings and can be extended with the stairs. Please see Gantry System Instructions.

Stairs (OpenLock)

Two types of stairs are available; these are with or without supports. They are both compatible with OpenLock Clips so can be extended or attached to Accessory Rings from the Flatline City Core Set.

Note there is also a 'Stairs Cap' model available to hide any OpenLock clip sockets at the bottom of the stairs.

