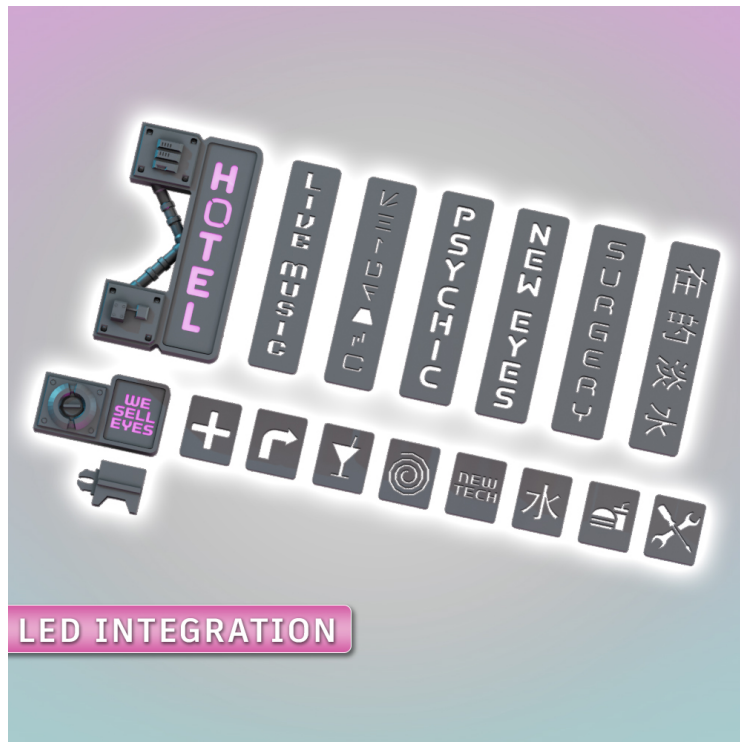




Instructions: LED Signs

V1.0



SAUCERMEN
STUDIOS

www.saucermenstudios.com.au

Thanks for supporting us! You're awesome!

Please respect our license terms by **not sharing** or selling the files or prints.

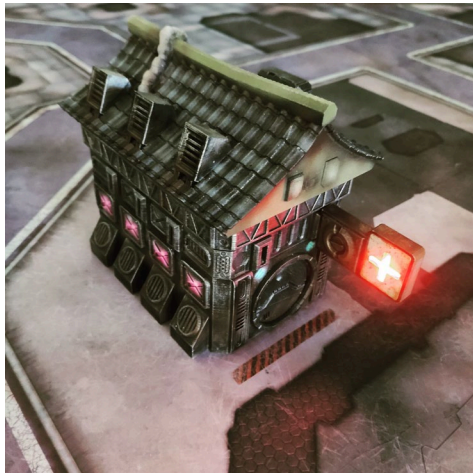
Commercial licenses are available if you want to print and sell the terrain.

KEY CONCEPTS

The signs can be integrated with LEDs without any wiring.

You will need:

- 5mm LED
- CR2032 Battery (3v)
- Wire Cutters
- Battery Caddy model (OpenLock Compatible)
- Sign Frame (2 choices)
- Sign Model (multiple choices)
- Baking / Parchment Paper
- Scissors



HELP & COMMUNITY

- Share your builds
- Get assistance
- Suggest improvements
- Join the community

<https://www.facebook.com/groups/64964644419610>

How to use

1. Print the required models and prepare the parts
2. (optional) Clip the LED legs to be around 15mm long
3. Place the battery inside the caddy, then insert the battery LED legs into the round hole with it's legs either side of the battery. NOTE if the LED does not light up, swap the orientation.
4. Slide the battery caddy with lit LED into your chosen frame. NOTE - The double frame can have two LEDs inserted.
5. (optional) Cut baking/parchment paper to the size of your sign and insert into the frame to diffuse the LED light.
6. Insert your chosen sign into the frame
7. Clip your sign onto an Accessory Ring from the Flatline City terrain Core Set or any suitable OpenLock Socket.

