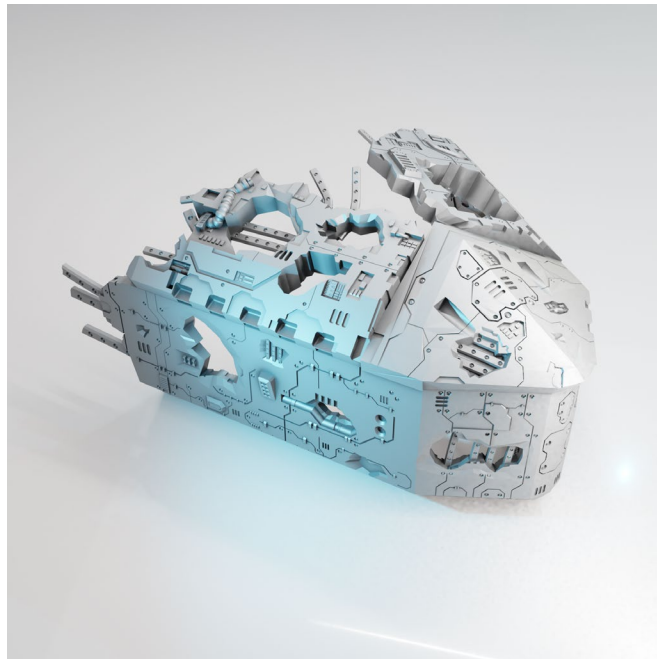


# LOST COLONY SPACESHIP GRAVEYARD

INSTRUCTIONS:

## NOSE SECTION

V1.0



**SAUCERMEN**  
STUDIOS

[www.saucermenstudios.com.au](http://www.saucermenstudios.com.au)

Thanks for supporting us! You're awesome!

Please **respect our license terms** by **not sharing** or selling the files or prints.

**Commercial licenses are available** if you want to print and sell the terrain.

## KEY CONCEPTS

Refer to the [Lost Colony: Spaceship Graveyard, Cores Set Instructions](#) for supplementary instructions on using and expanding this kit as it has compatible parts.

The Nose Section set includes five categories of component, each has variations of the following:

- Hull Nose Type A / B / C
- Hull Type A / B / C
- Nose Hull End
- Nose Roof

Use the **OpenLock Clips** provided to join parts together.

You do not need clips in all sockets.

## HELP & COMMUNITY

1. Share your builds
2. Get assistance
3. Suggest improvements
4. Join the community

<https://www.facebook.com/groups/6>

## BUILDING THE NOSE SECTION:

### Step One: Place Type A Hull Parts

Connect all of the 'Type A' hull pieces.



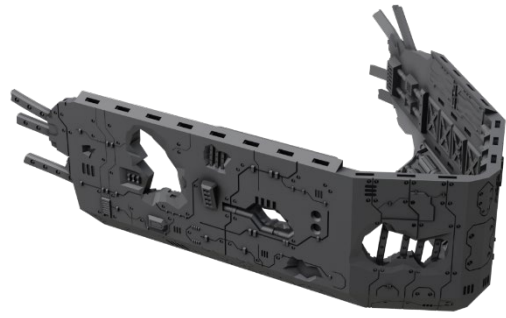
### Step Two: Place Type B Hull Parts

Connect all of the 'Type B' hull pieces together and add them on top of the previously built parts.



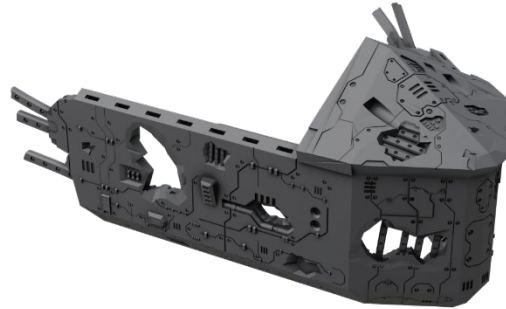
### Step Three: Place End Hull Parts

Attach the two hull end pieces. Note the shape matches a particular side.



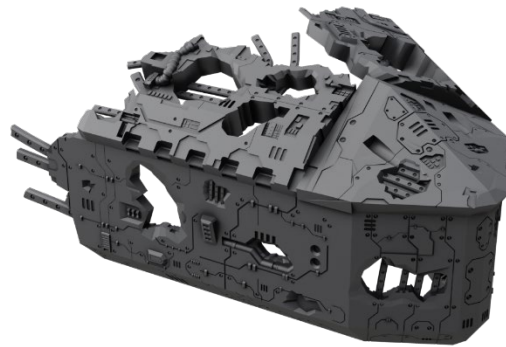
### Step Four: Place Front Roof Section

Attach the front roof piece.



### Step Five: Place Side Roof Sections

Attach the two remaining roof pieces.



### Step Six (Optional): Expand

You can expand this set with other sets from the Lost Colony series.