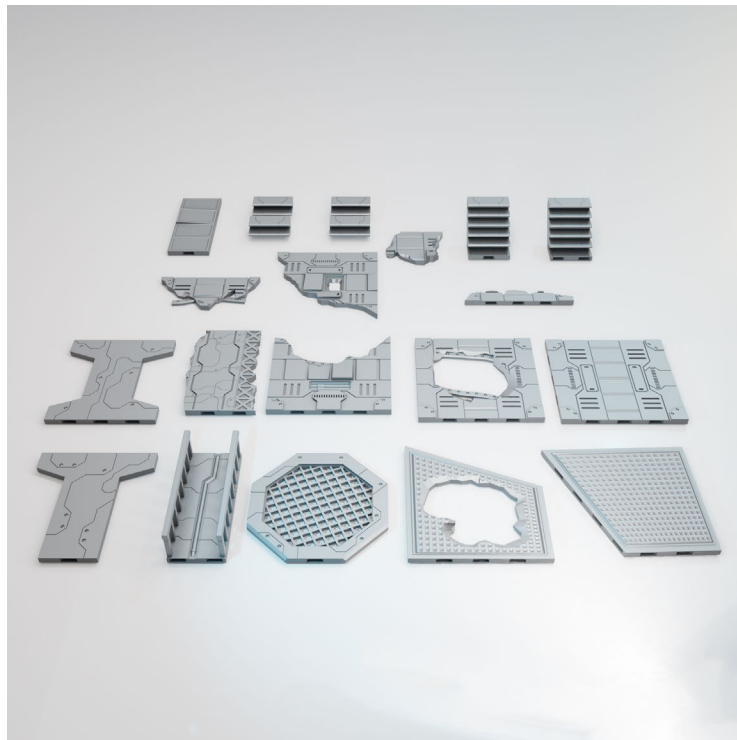


# LOST COLONY SPACESHIP GRAVEYARD

INSTRUCTIONS:

## Internal Flooring

V1.0



**SAUCERMEN**  
STUDIOS

[www.saucermenstudios.com.au](http://www.saucermenstudios.com.au)

Thanks for supporting us! You're awesome!

Please **respect our license terms** by **not sharing** or selling the files or prints.

## KEY CONCEPTS

Refer to the [Lost Colony: Spaceship Graveyard, Cores Set Instructions](#) for supplementary instructions on using and expanding this kit as it has compatible parts.

The Internal Flooring set is designed to be compatible with the following sets from this terrain series:

- Core Set
- Fuselage Wreckage
- Nose Section
- Internal Rooms & Corridors
- Survivor Outpost
- Interior Upgrades

Use the OpenLock Clips provided to join parts together.

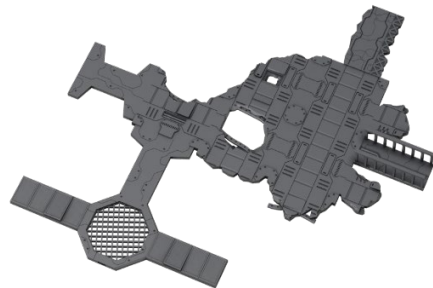
You do not need clips in all sockets.

Whilst the set is designed to be modular, because of the variety, you may find that some pieces do not align exactly to other models around it. You should try rotating or flipping the part or replacing it with a model that is more suited to your layout.

## EXAMPLES OF USE:

### Broken Floor Tiles

Connect various floor pieces together to create thematic surfaces. Note that some will sit better at certain angles.



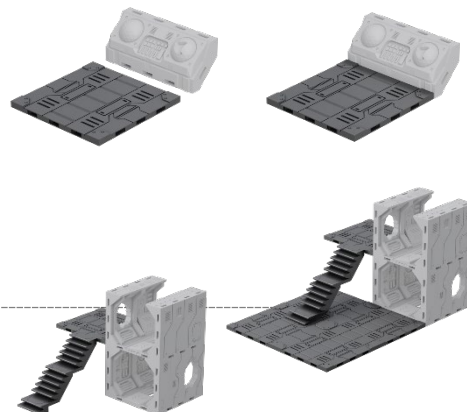
### Attach to Hull Pieces

Raise flooring, stairs and walkways off the table by connecting them to interior sides of some hull pieces.

Note the angled flooring to fit the Nose Section

#### Suggested parts:

- Hull Type A - N1.stl



## HELP & COMMUNITY

- Share your builds
- Get assistance
- Suggest improvements
- Join the community

<https://www.facebook.com/groups/6>

## Add Stairs

Raise your floors by connecting stairs.

### Note that:

- Standard Stair height matches type A & B Hull pieces
- Multiple stairs can be connected
- Two additional stairway extensions are available for various purposes. E.g. a shorter extension can be used on top of flooring.
- Stairs have two options for clips, single or double sockets.



## Attach to Rooms, Corridors and Fuselage Wreckage

Rooms, corridors and fuselage wreckage have clip sockets that allow flooring, stairs and walkways to be connected.

